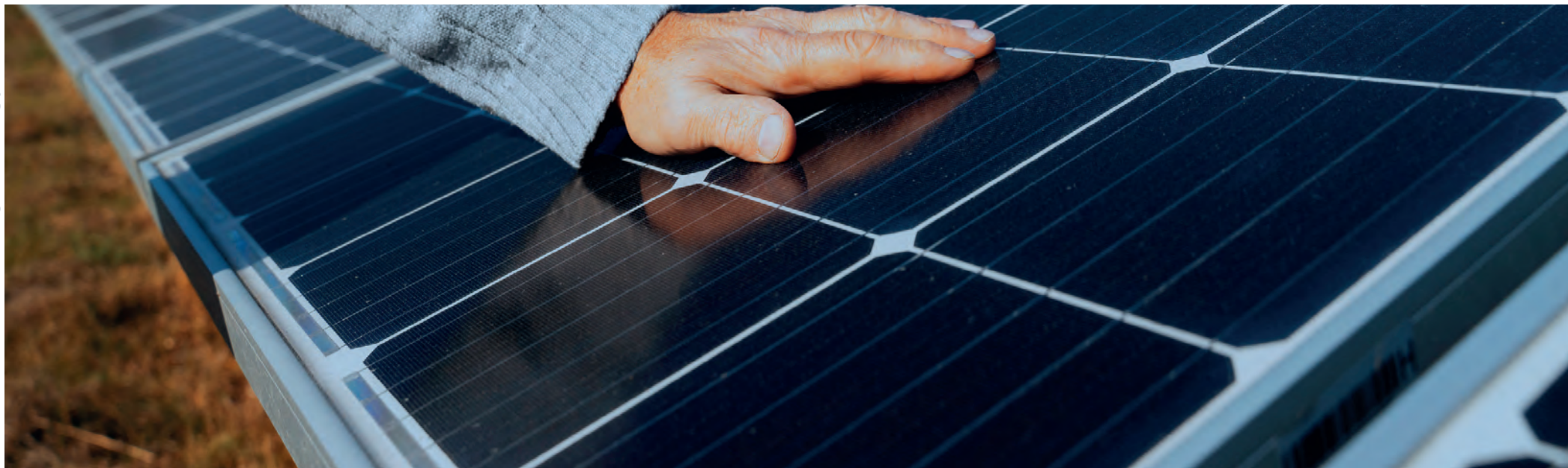


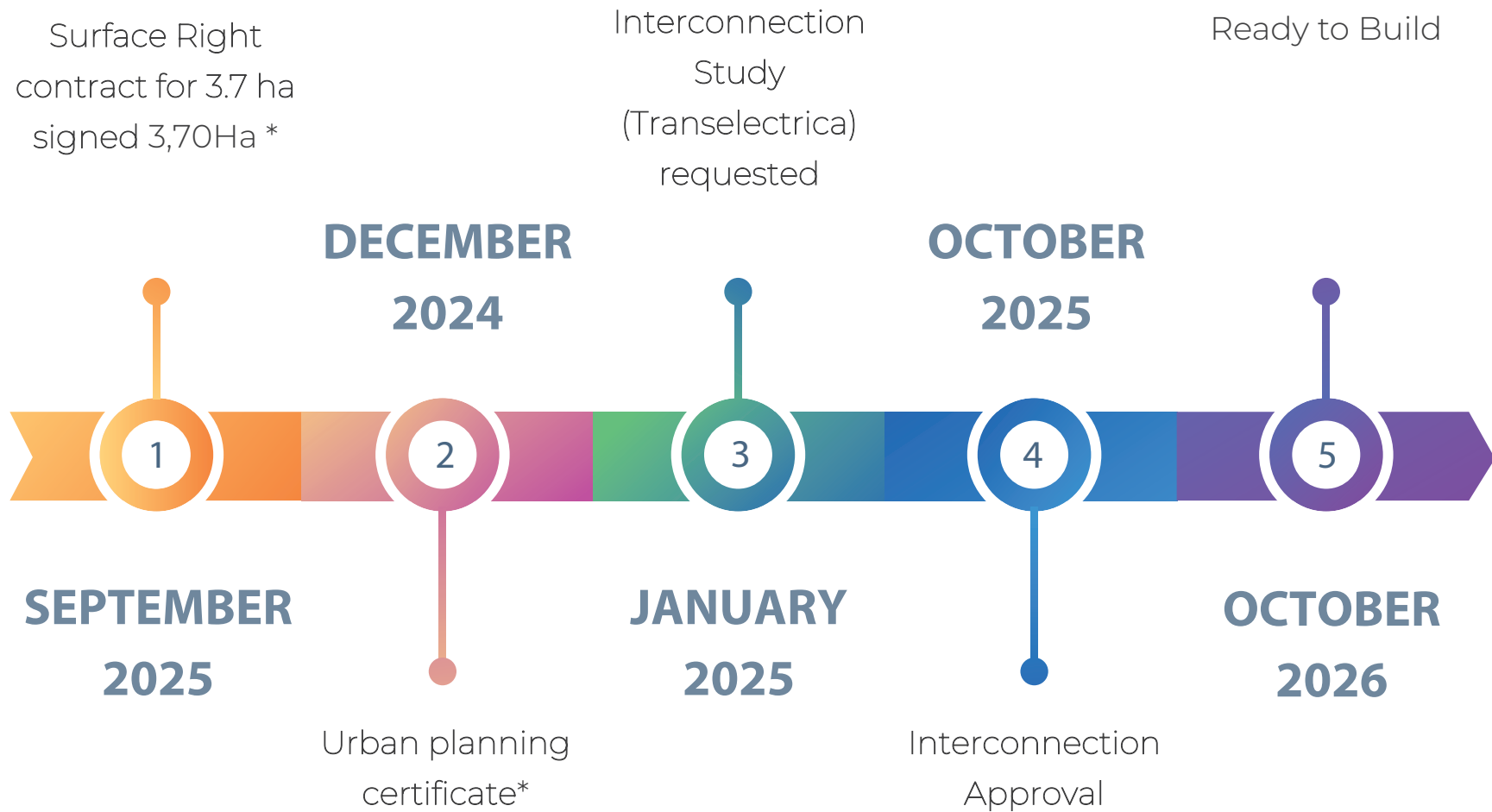


PROJECT TEASER

EPSILON BESS SRL



TIME LINE



* Mandatory condition according to Romanian legislation

PROCESS TO RTB

LAND

ACHIEVED ACTIVITIES

Contract signed, notarized and registered

Contract Phases:

DEVELOPMENT PHASE (3 years): Yearly payment (€100/surface)

CONSTRUCTION PHASE: NTP €8,000/Ha/year +VAT+CPI +non-payment guarantee (€40,000)

OPERATION PHASE: €8,000/Ha/year(30 YEARS) +VAT+CPI

PROJECT

ACHIEVED ACTIVITIES

- PROJECT LAYOUT DEL
- LAND OWNERSHIP CERTIFICATE , notarized and registered on behalf of the Project SPV
- URBANISM CERTIFICATE (authorizes construction)
- TECHNICAL MEMORANDUM (project and equipment)

INTERCONNECTION

ACHIEVED ACTIVITIES

- Engineering contract (signed by ANRE authorized by CERT. E1/D1)
- INETRCONNECTION REQUEST to TRANSELECTRICA
- PROJECT EQUIPMENTS DOCUMENTATION approved by ANRE with all the necessary tests

ENVIROMENTAL

"in accordance with Law No. 21.2023, the urban plan zone (PUZ) in Romania is no longer necessary to obtain the authorization for construction of photovoltaic parks in Romania nor for the development of renewable energy projects on nondevelopable agricultural land in Romania, classified in quality classes III, IV or V, located outside of the urbanizable areas, with a maximum area of 50 hectares"

IN SUMMARY

According to recent legislative amendments (such as Law No. 21/2023), projects related to renewable energy (such as photovoltaic parks on low-quality agricultural land, BESS and renewable energy projects) no longer need a PUZ. However, these projects must still comply with applicable environmental regulations if the land included in the PUZ is close to protected natural areas or sites with environmental restrictions, environmental laws will take priority, and the PUZ must be adjusted accordingly.

BESS 200MW / 4h



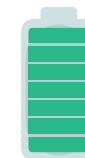
COD: january 2028

RTB: october 2026

DEVELOPMENT PHASE
18

CONSTRUCTION PHASE
14

OPERATION PHASE
30 YEARS



BESS
200 MW / 4h








PROJECT / LAND LOCATION



Zone J

TRANSELECTRICA

PROJECT DATA

 Location :	Sabaoani (Neamt)
 COD :	January 2028
 Power :	200MW / 4H
 Surface :	3,70Ha
 Substation :	Roman - Nord 400kv
 SE Distance :	1,80 Km
 Guarantees :	5% deposit of the costs requested as interconnection guarantee